

Santa Monica Cradle to Career **Youth Wellbeing Report Card.**



Produced by

**SANTA MONICA
CRADLE TO CAREER**

ABOUT THIS REPORT CARD.

The Youth Report Card presents data collected by the City of Santa Monica, Santa Monica College, Santa-Monica Malibu Unified School District (SMMUSD), and other community organizations and stakeholders. Together, our Santa Monica community is working to help all Santa Monica youth thrive throughout their lifespan.

Data collection has occurred annually since 2012, providing us with information to improve community services that support youth wellbeing.

The most recent data collection is from the 2021-2022 school year.



THE YOUTH REPORT CARD LOOKS AT FOUR KEY AREAS.

1



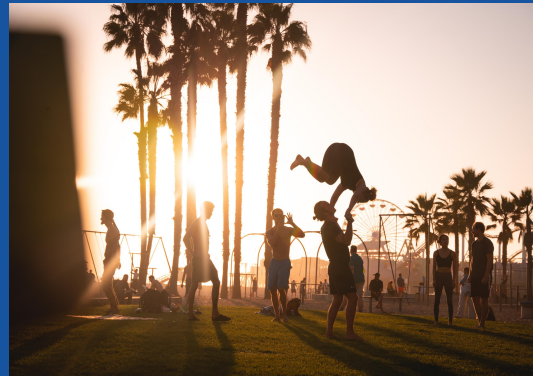
Learning
&
School
Achievement

2



Physical Health
&
Development

3



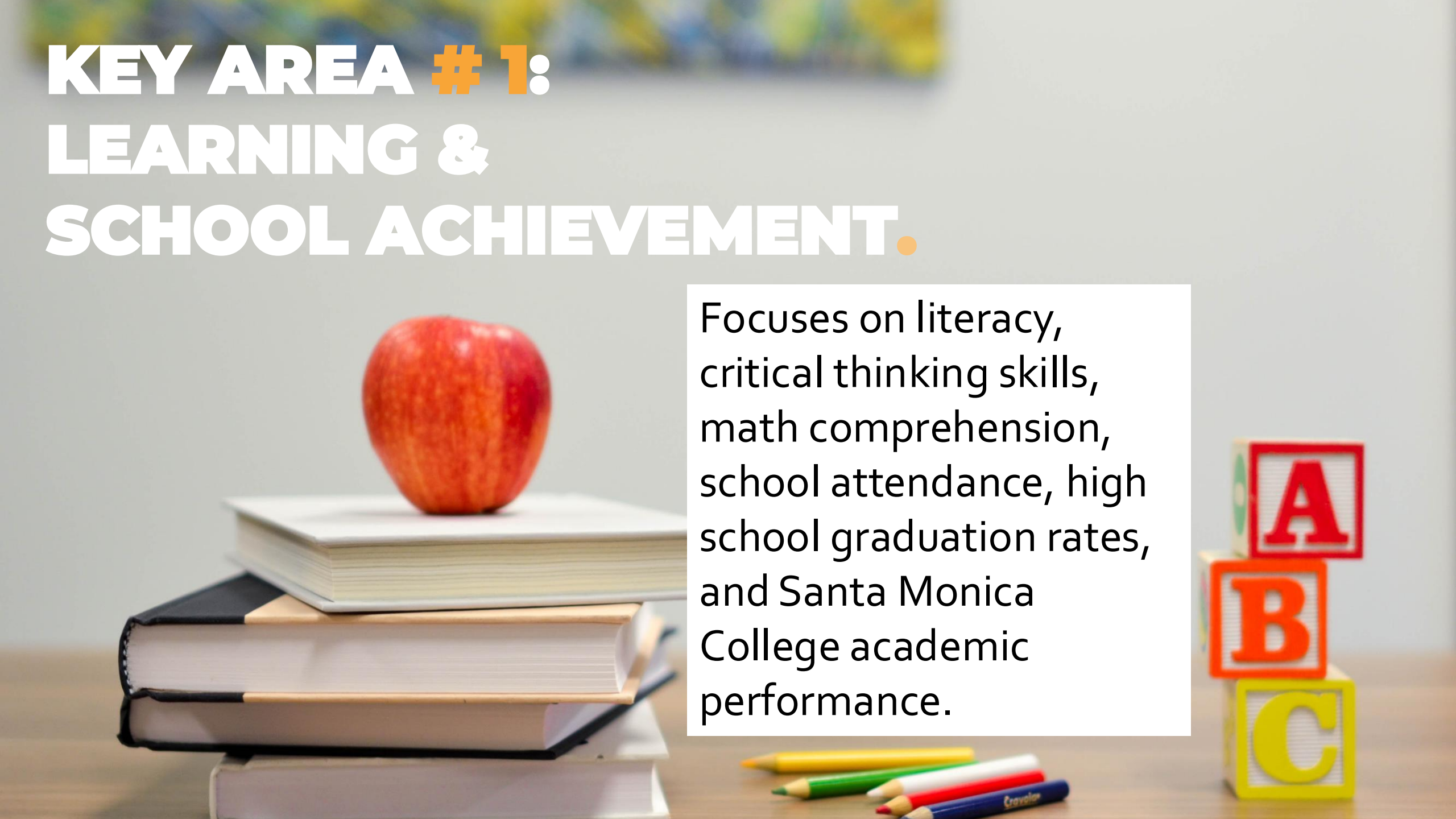
Behavioral Health
&
Wellbeing

4



Emotional &
Mental Health

KEY AREA # 1: LEARNING & SCHOOL ACHIEVEMENT.

A stack of four books is shown, with a red apple resting on top of the second book from the top. To the right of the books, there are three colorful alphabet blocks stacked vertically, labeled 'A', 'B', and 'C'. In the foreground, several colored pencils are scattered on a wooden surface. The background is a blurred, light-colored wall.

Focuses on literacy, critical thinking skills, math comprehension, school attendance, high school graduation rates, and Santa Monica College academic performance.

KEY AREA # 2: PHYSICAL HEALTH & DEVELOPMENT.

Concentrates on overall nutrition, physical health, and motor skills as well as crime vulnerability.



KEY AREA # 3: BEHAVIORAL HEALTH & WELLBEING.

Examines feelings of safety, security, and connectedness to peers and adults. Explores youth confidence and preparedness for school.



KEY AREA # 4: EMOTIONAL & MENTAL HEALTH.

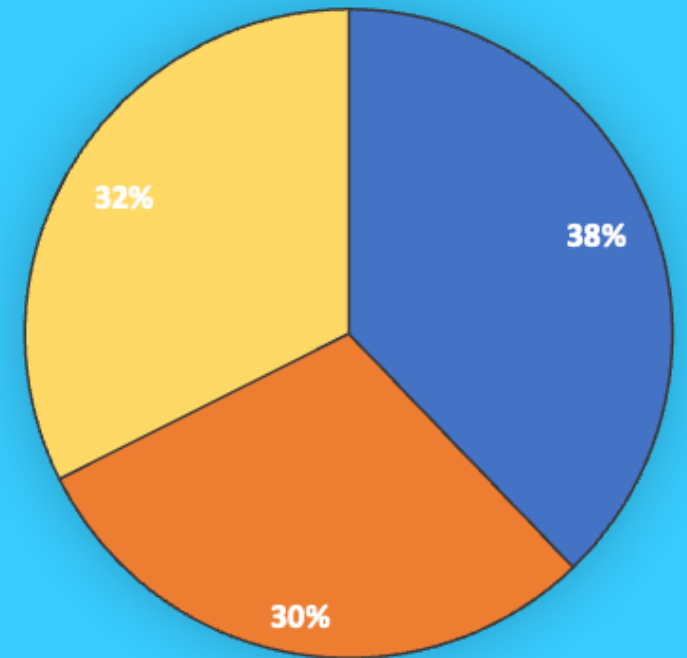
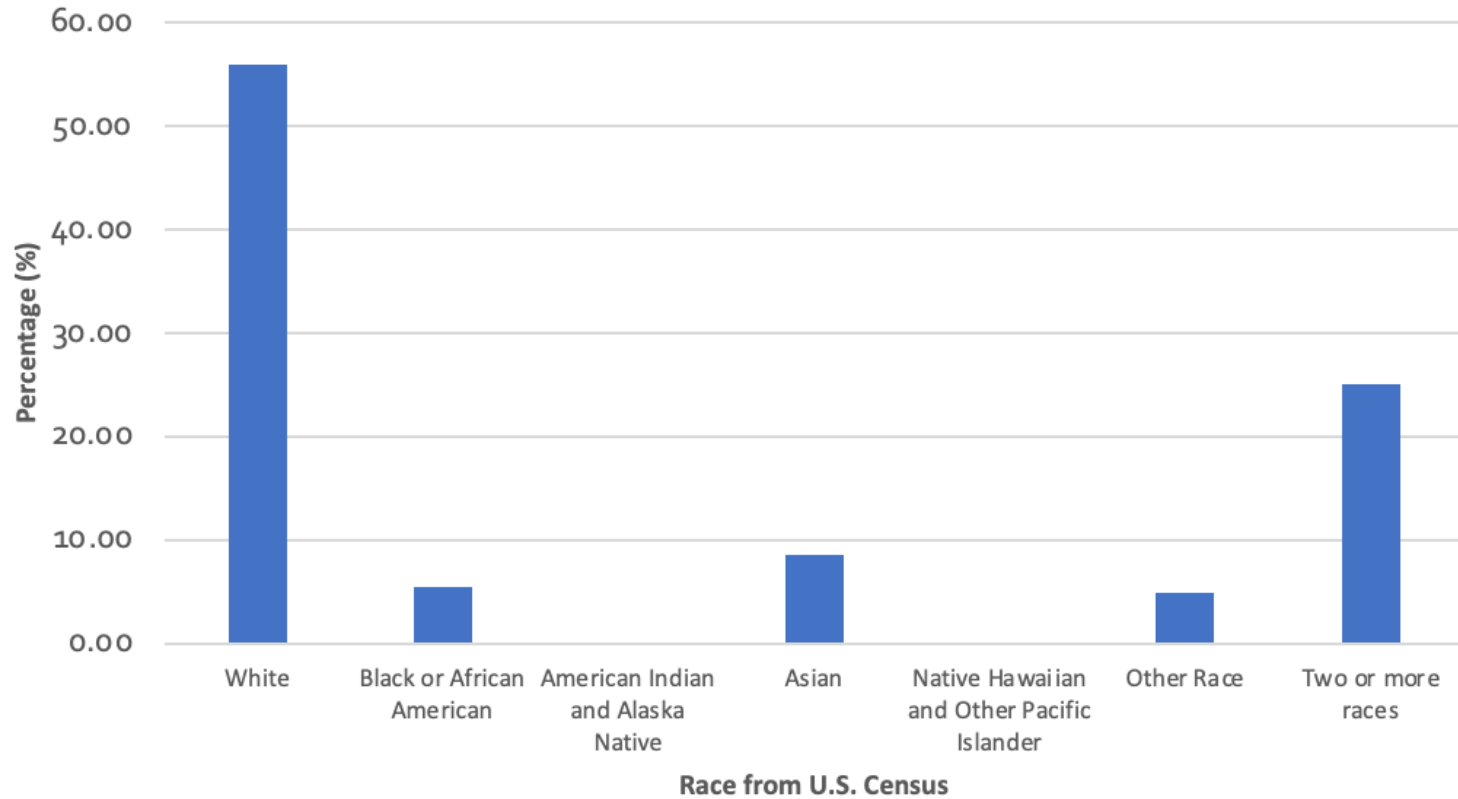


Explores emotional health, feelings of sadness or depression, and substance use.

SANTA MONICA YOUTH.

Santa Monica is home to over **13,800** children.

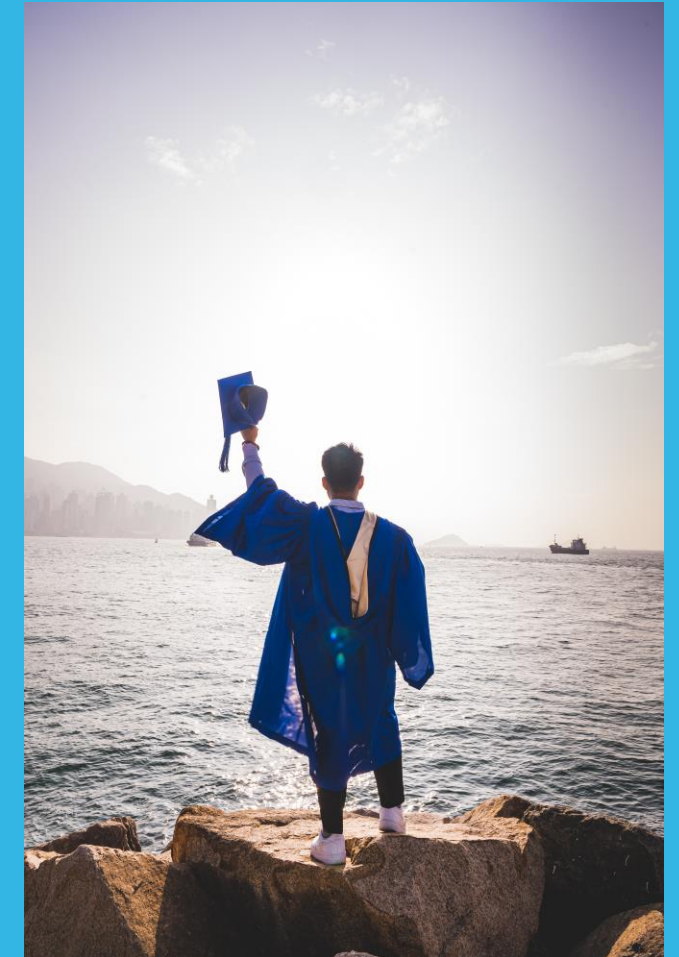
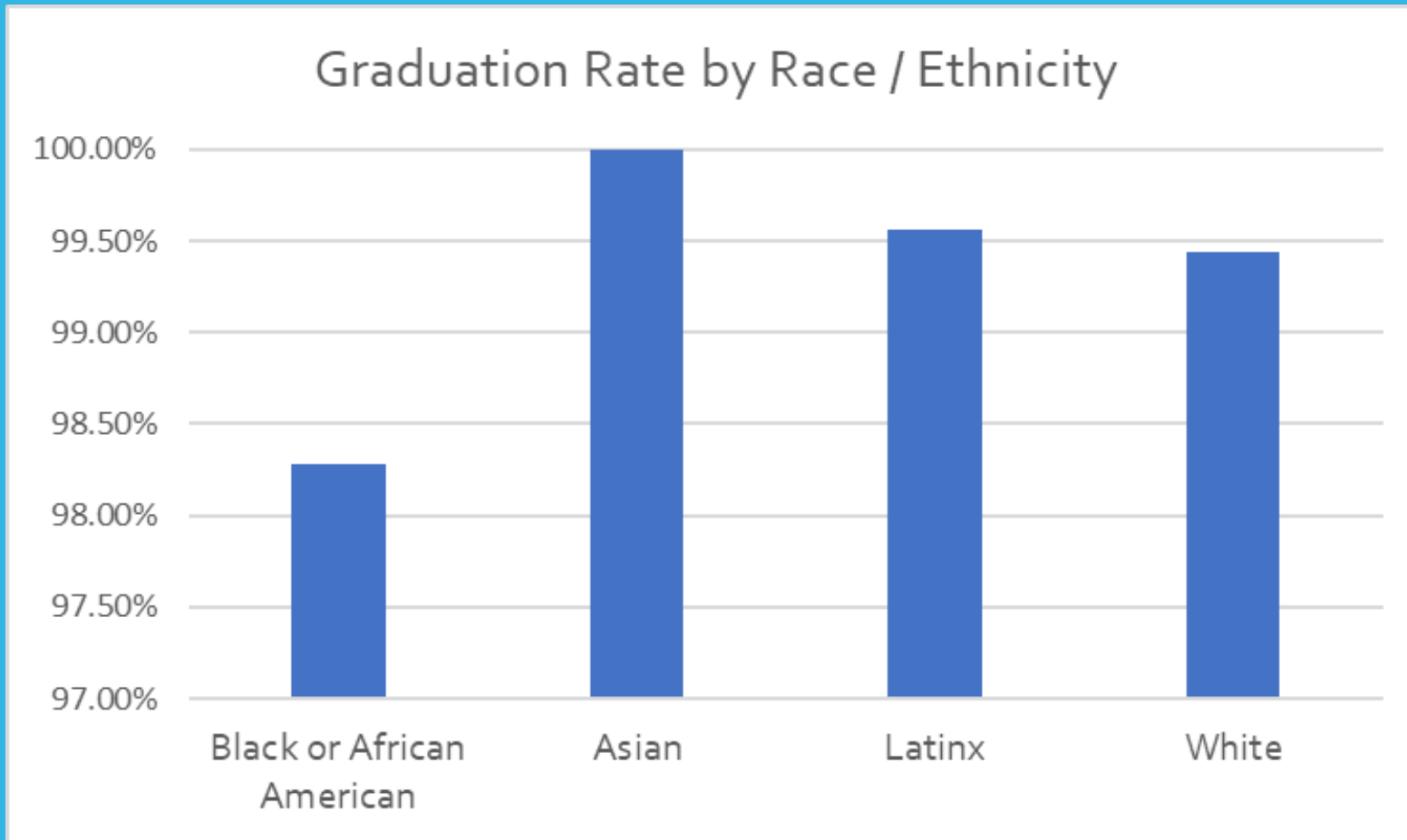
Race / Ethnicity of Santa Monica Youth



■ Under 6 years ■ 6 to 11 years ■ 12 to 17 years

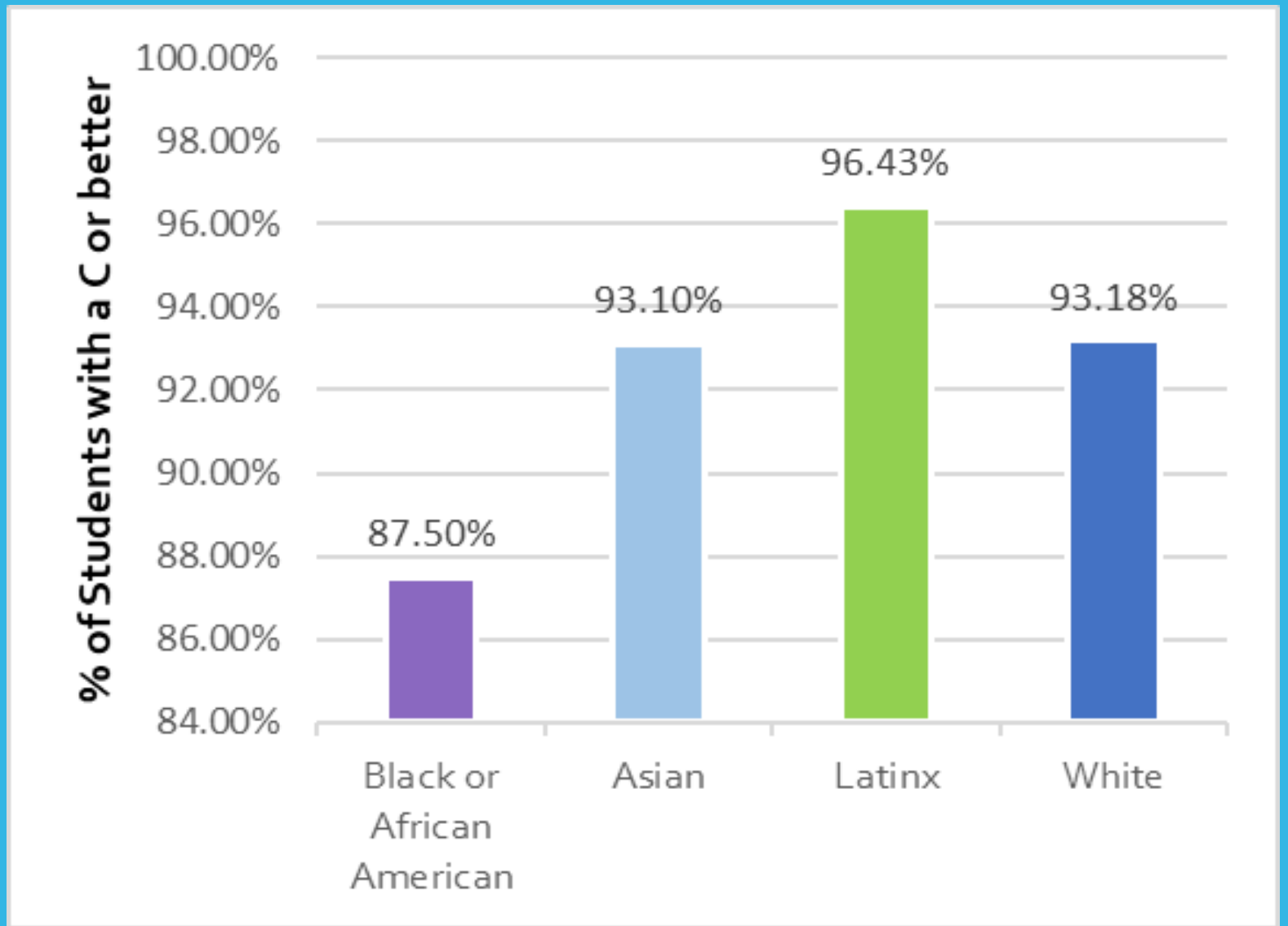
LEARNING & SCHOOL ACHIEVEMENT.

SMMUSD graduation rate: **99.43%**



LEARNING & SCHOOL ACHIEVEMENT.

Despite high graduation rates, we continue to see an equity gap when we break down the data of 8th grade students taking and successfully completing algebra with a C or better.



LEARNING & SCHOOL ACHIEVEMENT.

FINDINGS

Academic Success	2012/13	13/14	14/15	15/16	16/17	17/18	18/19	19/20	20/21	21/22	Data Source
Kindergarten children demonstrating readiness in communication skills and general knowledge	31.6% 179 / 567	33.2% 179 / 539	40% 188 / 471	42% 218 / 519	30% 154 / 405	37.4% 185 / 495	42% 204/485	43% 174/404	43% 1594/1381	39% 285/732	Early Development Instrument (EDI)
Kindergarten children demonstrating readiness in language and cognitive development	32.9% 187/567	30.8% 167/539	42.4% 198/471	34.2% 176/519	56.9% 231/405	48.2% 238/495	46% 223/485	44.2% 178/404	47% 649 / 1381	38% 278/732	EDI
Grade 3 students proficient or higher in language arts	66.4% 420 / 633	67.7% 444 / 656	63.0% 471 / 748	69.0% 500 / 725	69.2% 424 / 613	72.1% 403 / 559	n/a	n/a	n/a	n/a	SMMUSD

n/a = data not available

LEARNING & SCHOOL ACHIEVEMENT.

FINDINGS

Academic Success	2012/13	2013/14	2014/15	2015/16	2016/17	2017/18	2018/19	2019/20	2020/21	2021/22	Data Source
Grade 8 students taking and successfully completing algebra with a C or better	52.8% 383 / 725	58.9% 406 / 689	50% 368 / 735	51.9% 344 / 663	49.3% 373 / 756	47.6% 369 / 776	n/a	n/a	94.22% 212 / 225	93.4% 184 / 197	SMMUSD
Santa Monica High School graduation rate	90.9% 667 / 734	92% 679 / 738	95.4% 668 / 695	95.6% 690 / 720	94.6% 663 / 701	92.6% 665 / 718	n/a	95.4% 626 / 665	98.6% 689 / 712	99.43% 680 / 707	SMMUSD
Santa Monica High School graduates completing college admission (CSU/UC) requirements (SMMUSD)	77.0% 537 / 697	75.8% 515 / 679	72.3% 637 / 880	79.2% 685 / 865	70.0% 467 / 663	71.0% 472 / 665	n/a	n/a	89.6% 638 / 712	63.1% 446 / 707	SMMUSD
School Attendance											
School suspension rate	4.4%	2.8% 266 / 9,383	2.0% 196 / 9,387	1.2% 121 / 9,757	2.2% 207 / 9,524	2.5% 237 / 9,493	n/a	1.7% 150 / 9,030	.32% 26 / 8,147	4.5% 355 / 7,850	SMMUSD
Children who attend 90-100% of all school days	86.8% 8,139 / 9,377	87.7% 8,231 / 9,383	90.3% 8,520 / 9,439	90.9% 8,659 / 9,533	90.8%	89.7% 8,696 / 9,690	n/a	n/a	n/a	75.5% 5,929 / 7,850	SMMUSD

**Grade 8 algebra data: 2012-2018 percentages reflect success of all 8th grade students, 2020-2022 data reflect percentages of success among 8th grade student that took algebra.*

LEARNING & SCHOOL ACHIEVEMENT.

FINDINGS

Academic Success	2012/13	2013/14	2014/15	2015/16	2016/17	2017/18	2018/19	2019/20	2020/21	2021/22	Data Source
Santa Monica High School students entering Santa Monica College (SMC) who place in college-level English and Math	15.8% 32 / 202	17.6% 36 / 204	21.4% 45 / 210	18.8% 36 / 191	22.9% 54 / 236	28.6% 58 / 203	n/a	73% 103 / 141	77.1% 54/70	89% 74/83	SMC
First semester courses successfully completed with a C or higher by SMC students who graduated from a Santa Monica High School	68.3% 484 / 709	64.8% 431 / 665	67.0% 503 / 751	67.5% 470 / 696	67.2% 530 / 789	66.4% 598 / 901	n/a	57.3% 663 / 1158	60.0% 397 / 662	74.5% 436 / 585	SMC
SMC first-term fall students from a Santa Monica High School who re-enroll spring semester	85.6% 173 / 202	84.3% 172 / 204	86.2% 181 / 210	91.6% 175 / 191	86.4% 204 / 236	85.8% 206 / 240	86% 242 / 281	85% 241/281	74% 133/179	80% 159/199	SMC
First-term average GPA of SMC freshman who graduated from a Santa Monica High School	2.33	2.32	2.68	2.61	2.47	2.67	n/a	2.5	2.7	2.6	SMC

LEARNING & SCHOOL ACHIEVEMENT.

Next Steps:

Support the SMMUSD Three-Pronged Approach to Excellence through Equity and maximize opportunities to build partnerships to support equity.

1. Create a culture of shared accountability through a systems approach.
2. Teach cross-cultural and socio-emotional skills.
3. Engage in constant self-reflection around issues of equity.

Go to:



smmusd.org/lcff



LEARNING & SCHOOL ACHIEVEMENT.

BREAKING DOWN THE DATA (2021-2022)

Academic Success / School Attendance	TOTAL	GENDER		NEIGHBORHOOD						RACE/ETHNICITY				
		FEMALE	MALE	90401	90402	90403	90404	90405	Non-SM Unknown	Black or African-American	Asian	Hispanic	White	Other
Grade 8 students taking and successfully completing algebra with a C or better	93.4% 184/197	94.1% (96/102)	93.62% (88/94)	100% (7/7)	94.4% (17/18)	92.3% (48/52)	88.9% (32/36)	93.3% (56/60)	100% (24/24)	87.5% (7/8)	93.1% (27/29)	96.4% (27/28)	93.2% (123/132)	0% 0/0
School suspension rate	4.5% 318 /7850	2.9% 110/3821	6.1% 245/4019	4% 13/324	2.4% 13/539	2.5% 39/1589	6.9% 138/2011	4% 81/2011	5% 71/1316	15.3% 78/509	1.6% 10/638	6.6% 168/2557	2.4% 99/4071	4.5% 355/7850

/ = data is not available

To protect student privacy, information has been omitted when there are 10 or less students.

* Data is from SMMUSD

** Data is from California Department of Education

LEARNING & SCHOOL ACHIEVEMENT.

BREAKING DOWN THE DATA (2021-2022)

	GENDER		NEIGHBORHOOD					RACE/ETHNICITY						
Academic Success / School Attendance (cont.)	TOTAL	FEMALE	MALE	90401	90402	90403	90404	90405	Non-SM Unknown	Black or African-American	Asian	Hispanic	White	2 or more races
Santa Monica High School graduates completing college admission (CSU/UC) requirements	63.9% 366/573	68.8% 238/346	57.6% 208/361	41.2% 7/17	80% 40/50	73.2% 93/127	56% 102/182	62.9% (124/197)	60.31% (79/131)	37.9% (22/58)	73.4% (47/64)	56.8% (130/229)	69.7% (246/353)	0% 0/0
Santa Monica High School students entering Santa Monica College (SMC) who place in college-level English and Math	89.2% 74/83	90% 36/40	87.8% 36/41	100% 3/3	100% 3/3	83.3% 5/6	86.4% 19/22	76.2% 16/21	100% 28/28	100% 7/7	100% 5/5	86.5% 32/27	88.5% 23/26	85.7% 6/7
First semester courses successfully completed with a C or higher by SMC students who graduated from Santa Monica High School and Olympic High School	74.5% 436/585	75.2% 188/250	72.9% 226/310	69% 20/29	91% 20/22	77.8% 42/54	74.7% 115/154	77.1% 81/105	71.5% 158/221	59.4% 19/32	92.1% 35/38	69.6% 192/276	81.4% 149/183	71.7% 38/53

/ = data is not available

To protect student privacy, information has been omitted when there are 10 or less students.

LEARNING & SCHOOL ACHIEVEMENT.

BREAKING DOWN THE DATA (2021-2022)

	GENDER			NEIGHBORHOOD						RACE/ETHNICITY				
Academic Success / School Attendance (cont.)	TOTAL	FEMALE	MALE	90401	90402	90403	90404	90405	Non-SM Unknown	African-American	Asian	Hispanic	White	Other
SMC first-term fall students from Santa Monica High School who re-enroll spring semester	80% 159/199	79.6% 74/93	79% 79/100	88.9% 8/9	85.7% 6/7	84.2% 16/19	80.4% 41/51	79.5% 31/39	77% 57/74	84.6% 11/13	83.3% 10/12	77.9% 74/95	78.3% 47/60	88.9% 16/18
Average first-term GPA of SMC freshman who graduated from Santa Monica High School	Avg GPA: 2.6	2.6	2.5	2.7	3.0	2.8	2.6	2.6	2.4	2.0	3.4	2.3	2.8	2.5
Children who attend school daily (90%–100% of all school days)	76% 4967/6534	76% 2,904/3,821	75.1% 3,017/4,019	67.6% 219/324	82.8% 446/539	82.4% 1,309/1,589	70.2% 1,411/2,011	76.4% 1,582/2,071	73.3% 957/1,306	69.8% 449/643	87% 736/846	66.6% 1,702/2,557	80.1% 3,023/3,774	63.3% 19/30
Santa Monica High School Graduation Rate	99.4% 680/707	99.7% 339/346	99.2% 341/361	100% 17/17	100% 50/50	99.2% 126/127	100% 182/182	99% 195/197	99.2% 130/131	98.3% 57/58	100% 64/64	99.6% 228/229	99.4% 354/356	n/a

/ = data is not available

To protect student privacy, information has been omitted when there are 10 or less students.

LEARNING & SCHOOL ACHIEVEMENT.

Next Steps:

Support the SMMUSD Three-Pronged Approach to Excellence through Equity and maximize opportunities to build partnerships to support equity.

1. Create a culture of shared accountability through a systems approach.
2. Teach cross-cultural and socio-emotional skills.
3. Engage in constant self-reflection around issues of equity.

Go to:



smmusd.org/lcff



PHYSICAL HEALTH & DEVELOPMENT.

Access to healthcare and good nutrition, strong physical fitness levels, and low youth crime rates are key indicators of the physical wellbeing of our youth.

PHYSICAL HEALTH & DEVELOPMENT.

FINDINGS

Youth Physical Health, Nutrition, and Access to Healthcare Services (2012-2022)

	2012/13	2013/14	2014/15	2015/16	2016/17	2017/18	2018/19	2019/20	2020/21	2021/22	Data Source
Immunization rate for children entering Kindergarten	87.0% 885 / 1,015	N/A	82.0% 823 / 1,005	88.0% 955 / 1,091	90% 2,193 / 2,429	92% 882 / 962	n/a	n/a	n/a	n/a	SMMUSD
Children entering Kindergarten who are very physically ready for school	32.3% 183 / 567	30.8% 166 / 539	34.0% 160 / 471	36.0% 187 / 520	37.0% 150 / 405	40.8% 202 / 495	39% 200/520	38% 195/513	41% 692/1688	43% 342/796	EDI
SMMUSD students utilizing the Reduced and Free Lunch Program	29.4% 2,840 / 9,663	25.7% 2,409 / 9,383	33.9% 3,128 / 9,229	33.7% 3,133 / 9,291	28.5% 2,427 / 8,521	28.1% (SAMOHI)	n/a	25.4% 1855/7290	23.5% 1554/6616	27.6% 1802/6534	SMMUSD
SMMUSD Santa Monica students in a healthy zone (i.e., passing at least 4 of 6 state test fitness components)	81.4% 1,746 / 2,145	84.9% 1,777 / 2,094	87.2% 1,785 / 2,049	85.9% 1,182 / 1,376	89.2% 2,234 / 2,504	84.9% 1,687 / 1,987	n/a	n/a	n/a	n/a	SMMUSD
Teen birth rate (ages 13-19)	0.6% 14 / 2,393	0.9% 7 / 807	N/A Less than 5	N/A Less than 5	0.7% 6 / 858	N/A Less than 5	n/a	n/a	n/a	n/a	DPH
Santa Monica residents receiving CalFresh Benefits	n/a	n/a	n/a	n/a	3.5% 3,256/92,169	3.4% 3,143 / 92,169	n/a	n/a	n/a	n/a	LADPP

PHYSICAL HEALTH & DEVELOPMENT.

FINDINGS

Santa Monica Police Department Data: Youth Interactions with Santa Monica Police (2021 – 2022)

	2012	2013	2014	2015	2016	2017	2018	2019	2020	2021	2022
Youth cited for crimes in Santa Monica											
Ages 13-17	75	83	41	46	18	15	15	7	6	10	10
Ages 18-24	85	164	271	314	264	198	171	114	64	61	50
Youth arrested in Santa Monica											
Ages 13-17	21	17	15	14	2	6	0	2	1	2	6
Ages 18-24	114	112	107	110	90	96	74	59	24	24	35
Reported incidents in Santa Monica where a Santa Monica youth was the victim											
Ages 0 - 17	135	145	90	90	76	76	63	83	32	46	63
Ages 18-24	110	214	234	243	247	248	203	189	165	143	156

PHYSICAL HEALTH & DEVELOPMENT.

BREAKING DOWN THE DATA (2022)

Youth Interactions with the Santa Monica Police Department: Demographic Breakdown (2022)

		GENDER		ZIP CODE					RACE / ETHNICITY				
	Total	Female	Male	90401	90402	90403	90404	90405	Asian	Black	Latinx	White	Other
Youth cited for crimes in Santa Monica													
Ages 13-17	10	2	8	2	4	1	3	0	0	1	3	6	0
Ages 18-24	50	16	34	14	0	8	12	16	2	7	13	23	5
Youth arrested in Santa Monica													
Ages 13-17	6	1	5	2	0	0	2	2	0	4	2	0	0
Ages 18-24	35	6	29	11	0	6	10	8	1	11	13	8	2
Reported incidents in Santa Monica where a Santa Monica youth was the victim													
Ages 0-17	63	20	42	5	5	11	25	16	4	8	16	30	1
Ages 18-24	156	65	88	30	6	26	0	36	6	11	25	67	15

**Note: where numbers may not equal the total, data is missing on reports (e.g., gender or race not always recorded).*

PHYSICAL HEALTH & DEVELOPMENT.

Santa Monica children are entering kindergarten physically ready for school:

Dressed – Alert – On-Time – Well Fed

As reported by kindergarten teachers in annual kindergarten readiness survey, only 53% of children city-wide are ready in terms of gross and fine motor skills.



PHYSICAL HEALTH & DEVELOPMENT.

Next Steps:

To support with increasing readiness for fine motor and gross motor skills and help prepare your child for kindergarten:

1. Learn about developmental milestones.
2. Enroll your child in preschool.

Go to:



cdc.gov/ncbddd/actearly/

3. Talk to your child's teacher and/or pediatrician about any questions or concerns.



BEHAVIORAL HEALTH & WELLNESS.

FINDINGS

In-School	2012/13	2013/14	2014/15	2015/16	2016/17	2017/18	2018/19	2019/20	2020/21	2021/22	Data Source
Children identified as very socially ready for kindergarten	28.6% 162 / 567	24.1% 130 / 539	32.0% 150 / 471	32.0% 166 / 520	29% 117 / 405	32.7% 162 / 495	32% 507/1585	34% 570/ 1677	33% 497/ 1505	32% 255/797	EDI
Students who report they have a caring relationship with a teacher or other adult at school (reported "high")	37.6% 850 / 2,262	41.3% 575 / 1,393	37% 772 / 2,087	37% 796 / 2,152	44.3% 949 / 2,142	33.5% 783 / 2,338	68% 1260/185 3	67.7% 1402/2072	n/a	64% 905 / 1,394	CHKS
Students who report they feel safe at school	67.4% 1,525 / 2,262	69.5% 968 / 1,393	71.5% 1,492 / 2,087	69.7% 1,500 / 2,152	79% 1,692 / 2,142	63% 1,318 / 2,338	67% 1241/185 3	61% 1264/2072	n/a	65% 900 / 1,394	CHKS
Students who report being harassed on school property	34.2% 774 / 2,262	33% 536 / 1,393	30.5% 636 / 2,087	34% 732 / 2,152	20.8% 445 / 2,142	32% 747 / 2,338	29% 540/1853	31% 641/2072	n/a	28.7% 400 / 1,394	CHKS

BEHAVIORAL HEALTH & WELLNESS.

FINDINGS

In-School (cont.)	2012/13	2013/14	2014/15	2015/16	2016/17	2017/18	2018/19	2019/20	2020/21	2021/22	Data Source
Children identified as very emotionally ready for kindergarten (EDI)	33.7% 191 / 567	31.7% 171 / 539	42.0% 197 / 470	43.0% 222 / 517	38.0% 154 / 404	41.4% 205 / 495	42% 665/1584	42% 703/1675	44% 605/1375	45% 296/658	EDI
Youth who report they experienced significant periods of extreme sadness and hopelessness over the previous 12 months (CHKS)	25.3% 573 / 2,262	26.5% 367 / 1,393	26% 274 / 1,054	24.6% 529 / 2,152	31.5% 675 / 2,142	28.1% 587 / 2,092	32% 590/1853	33.3% 690/2072	n/a	32.5% 453 / 1,394	CHKS
Middle and high school students who report they have a caring adult outside of school and home (CHKS)	86.1% 1,948 / 2,262	88% 1,226 / 1,393	69.3% 1,423 / 2,063	68.3% 1,463 / 2,152	71.3% 2,117 / 2,969	76.5% 1,600 / 2,092	Not survey question	Not survey question	Not survey question	Not survey question	CHKS

REFERENCES

2012/2013 California Healthy Kids Surveyed Grades 7, 9, 11, & Olympic High School.

2013/2014 and 2014/2015 California Healthy Kids Surveyed Grades 9 & 11.

2015/16 California Healthy Kids Surveyed Grades 7, 9, & 11 (this data is an average of all three grades).

BEHAVIORAL HEALTH & WELLNESS.

FINDINGS

Violence and Substance Abuse Rates	2012/13	2013/14	2014/15	2015/16	2016/17	2017/18	2018/19	2019/20	2020/21	2021/22
Reported rate of child abuse (DPH) This data reflects substantiated child abuse referrals.	0.5% 61 / 12,580	0.4% 45 / 12,474	0.3% 45 / 13,842	0.4% 52 / 13,842	0.4% 51 / 12,694	/	/	/	/	/
Reported rate of domestic violence to SMPD where minors are involved (SMPD)	0.2% 26 / 12,580	0.1% 13 / 12,474	0.1% 16 / 13,842	0.03% 5 / 13,842	0.05% 8 / 13,842	0.06% 8 / 13,551	3 minors (year 2019)	0 minors (year 2020)	2 minors (year 2021)	1 minor (year 2022)
Youth who report they have used alcohol in the last 30 days	28.6% 648 / 2,262	26.5% 369 / 1,393	27.5% 289 / 1,054	20.7% 445 / 2,152	22% 471 / 2,142	15.4% 323 / 2,092	10.8% 199 / 1,853	16% 347 / 2,072	n/a	15% (209 / 1,394)
Youth who report they have used any illicit alcohol or drug in the last 30 days	/	/	/	/	/	15% 313 / 2,092	15.5% 590 / 1,853	21% 434 / 2,072	n/a	18.5% (258 / 1,394)

BEHAVIORAL HEALTH & WELLNESS.

BREAKING DOWN THE DATA (2021-2022) CHKS

Social Skills & Confidence	TOTAL	Grade 7	Grade 9	Grade 11	Olympic
Students who report they have a caring relationship with a teacher or other adult at school	64% 905/1394	67% 290/433	61% 332/545	68% 283/416	n/a
Students who report they feel safe at school (in-school only)	65% 900/1394	70% 302/432	64% 345/540	61% 253/416	n/a
Students who report experiencing harassment or bullying in the past 12 months	28.7% 400/1394	38% 165/433]	24% 131/545	25% 104/416	n/a

BEHAVIORAL HEALTH & WELLNESS.

BREAKING DOWN THE DATA (2021-2022) CHKS

Emotional Maturity & Mental Health	TOTAL	Grade 7	Grade 9	Grade 11	Olympic
Youth who report they experienced chronic periods of extreme sadness and hopelessness	32.6% 455/1394	26% 113/433	33% 180/545	39% 162/416	n/a
Youth who have seriously considered attempting suicide in the past 12 months	14% 195/1394	12% 52/433	14% 76/545	16% 67/416	n/a
Youth who report they have used alcohol in the last 30 days	15%0 209/1394	3% 13/433	13% 71/545	30% 125/416	n/a
Youth who report they have used any illicit alcohol or drug in the last 30 days.	18% 258/1394	4% 17/433	16% 87/545	37% 154/416	n/a

BEHAVIORAL HEALTH & WELLNESS.

BREAKING DOWN THE DATA (2021-2022) EDI

NEIGHBORHOOD

Emotional Maturity & Mental Health	TOTAL	Mid-City	North Montana	Northeast	Ocean Park	Pico	Sunset Park	Wilshire/Montana
Children identified as very socially ready for school	32% 255/796	24% 29/123	37% 23/63	31% 13/42	30% 17/56	32% 42/132	36% 59/164	28% 43/153
Children identified as very emotionally ready for school	45% 358/796	33% 35/105	47% 25/53	47% 16/34	41% 18/44	53% 59/112	38% 51/133	38% 44/115

A slash through a data cell means data is not available.

Some data points do not have the total sum due to unavailable data.

BEHAVIORAL HEALTH & WELLNESS.

More than **1/3** of youth report feeling constant anxiety and depression...

But **Mental Health Supports** are available on campus and can be explored online through the Program Finder.



ABOUT SMC2C.

Santa Monica Cradle to Career (SMC2C) is a collective impact initiative consisting of the City of Santa Monica, Santa Monica College, Santa Monica-Malibu Unified School District (SMMUSD), service providers, and community stakeholders/advocates working together to develop a continuum of services and opportunities to ensure children and youth thrive from birth to adulthood.

The SMC2C Network will continue to focus on the four key goal areas that were originally identified in 2014. Each goal area has an active workgroup, charged with analyzing relevant data, building collaborations across systems and institutions, analyzing policies and programming targeting the populations at risk, and setting strategic goals to address the concerning data in this report.



References

California Healthy Kids Survey data, 2021-2022.
Early Development Instrument (EDI) data, 2022.
Santa Monica College data, 2022.
Santa Monica Malibu Unified School District data, 2021-2022.
Santa Monica Police Department Data, updated 2022.
U.S. Census Bureau, [American Community Survey](#) (Jan. 2020).



Join the conversation.



santamoniacradletocareer.org



SANTA MONICA-MALIBU UNIFIED SCHOOL DISTRICT



City of
Santa Monica