



City of
**Santa
Monica**

A Public Process to Determine the Future of the Santa Monica Airport

Arts Commission

March 20, 2023

<http://www.santamonica.gov/future-of-santa-monica-airport-project>



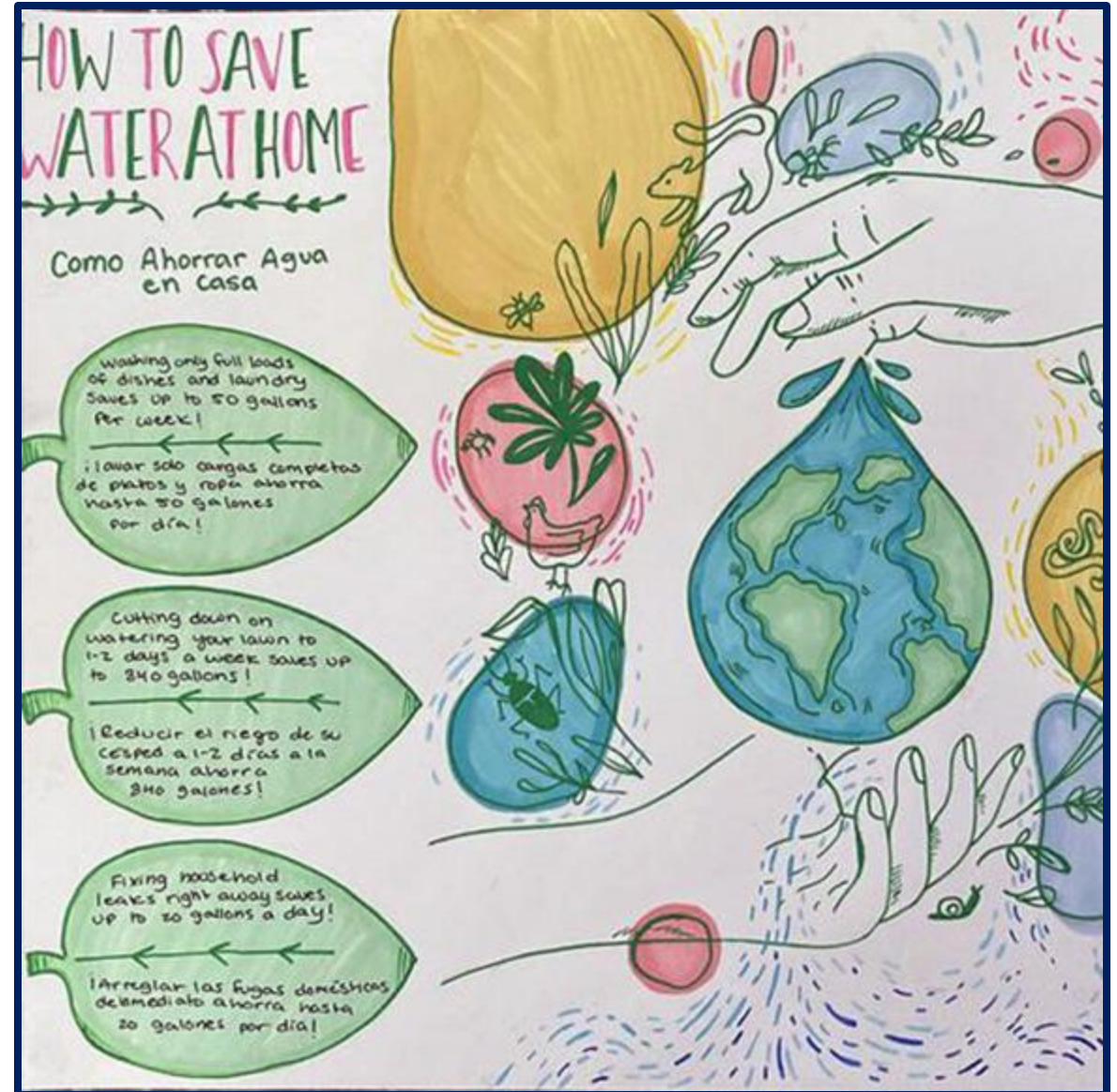
City of
**Santa
Monica**

The Role of Sustainability



PROJECT PRESENTS SUSTAINABLE, GENERATIONAL OPPORTUNITIES FOR SANTA MONICA

- Sustainable land management
- Resource conservation
- Regenerative design
 - Water, Energy, Nature & Wildlife
- Equity and inclusion
- Health and happiness





City of
**Santa
Monica**

Background and History



Sunset Park

Business Park

Santa Monica
Los Angeles

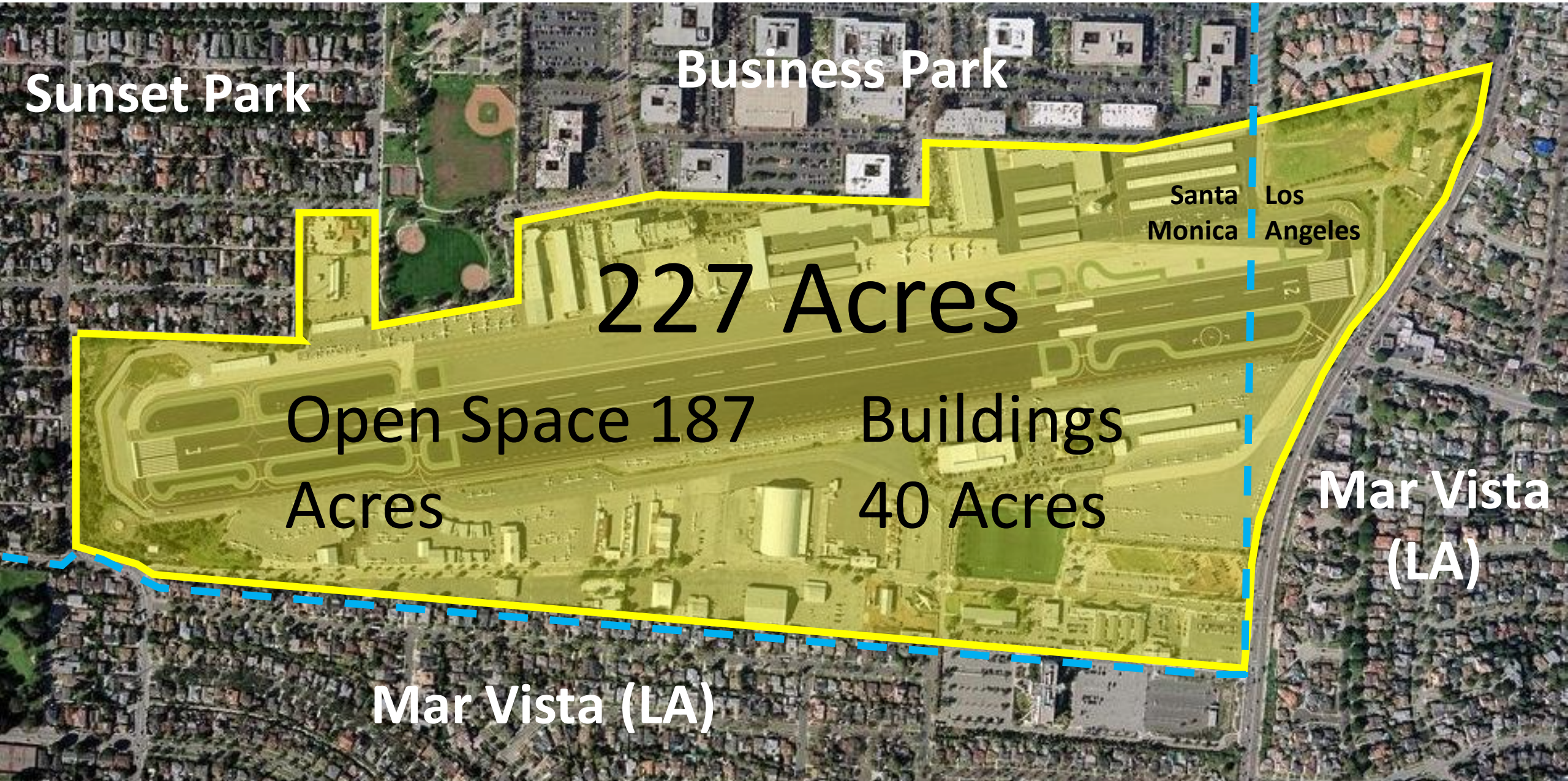
227 Acres

Open Space 187
Acres

Buildings
40 Acres

Mar Vista
(LA)

Mar Vista (LA)



AIRPORT IS HOME TO AVIATION AND NON-AVIATION INDUSTRIES

- 166 total businesses
- 43 industry sectors
- \$20M annual revenue
(Airport Fund)
- Recreational uses
- Arts, culture, education
- Retail and restaurant
- Many more...



ARTISTS AT THE AIRPORT

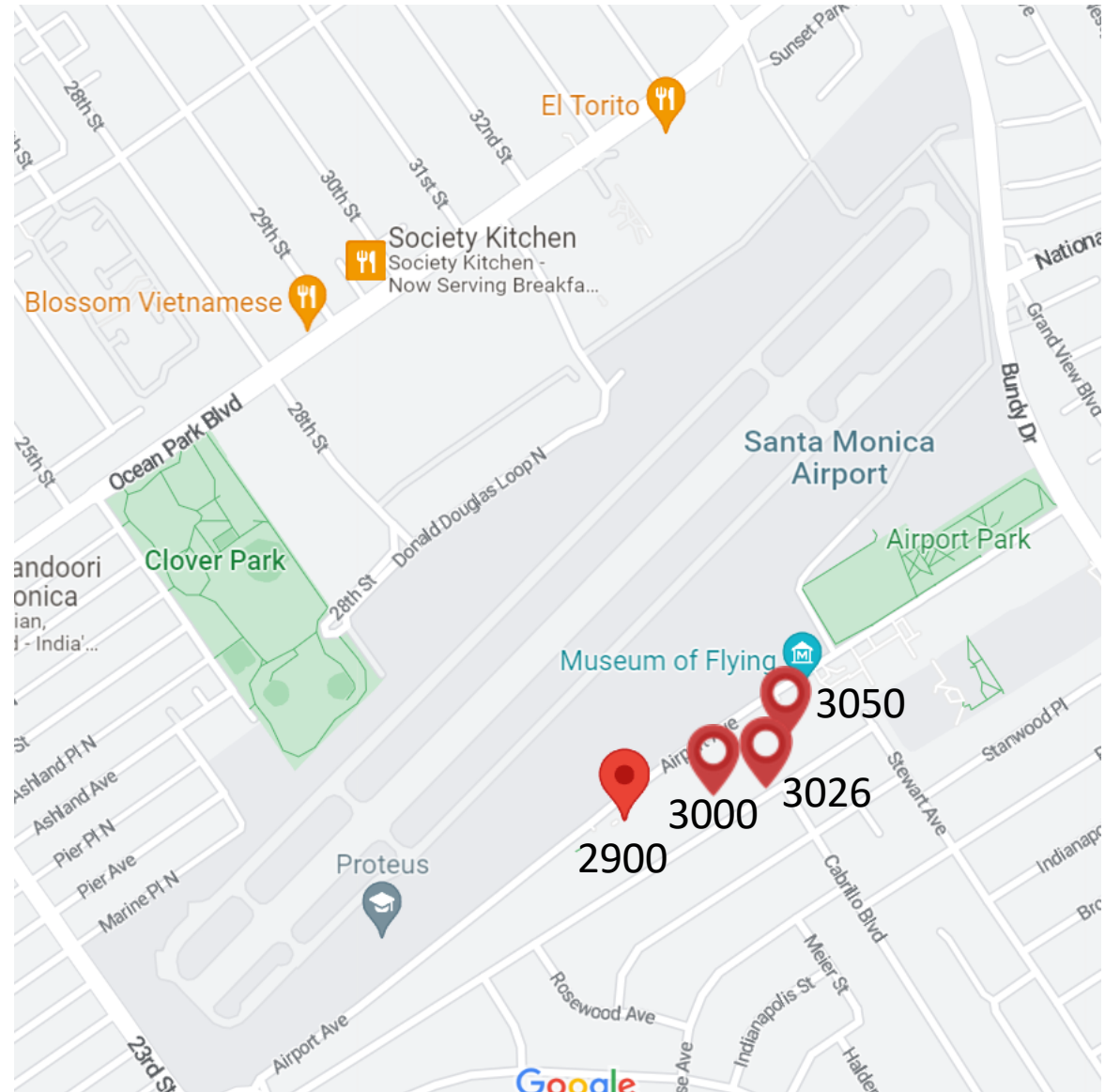
- Largest concentration of working artists in Santa Monica
- Currently, about 50 artist studios on campus (1/2 of all day studios in the city)
- Rich tradition dating back to 1950's

ART AT THE AIRPORT



ARTISTS AT THE AIRPORT

- 2900 Airport Avenue
- 3000 Airport Avenue (Ruskin)
- 3050 Airport Avenue
- 3026 Airport Avenue (18th Street Campus)



CITY HAS LEGAL AUTHORITY TO CLOSE AIRPORT

- Authorized for closure after December 31, 2028
 - Requires Council action
 - Written Notice to FAA
 - Environmental Review
 - Ordinance for enforce and prohibit aviation activities
 - Develop the mechanisms, procedures and penalties for violation.
- Budget established for planning process to determine future use of land

GENERAL AVIATION

FAA Caves In to City Demand To Close Santa Monica Airport

by Matt Thurber - January 29, 2017, 8:14 PM



After the city of Santa Monica shortens SMO airport's runway to 3,500 feet, large business jets like those in the background will no longer be able to use the iconic airport. (Photo: Matt Thurber)



California's Santa Monica Airport (SMO), both historically important and a key part of the National Airspace System (NAS), will close at the end of 2028, the FAA said on Saturday following two weeks of negotiations between city leaders and the agency. Somewhat sooner, possibly within a year, the city of Santa Monica, which owns the 227-acre airfield, will cut the 4,973-foot runway down to 3,500 feet, effectively eliminating access to the larger jets that currently fly there.

Before Saturday's surprise settlement, the city and FAA had been embroiled in multiple lawsuits, with the city council and its airport commission firmly arguing for closing the airport while the FAA and pro-airport proponents repeatedly pointed out that after World War II, the city had signed an instrument of transfer to keep the airport

2014 - MEASURE LC LIMITS LAND USE AT SANTA MONICA AIRPORT

- After Airport closes, no new development until voters have approved limits on uses
- Provides exemptions for:
 - Parks and public open spaces
 - Recreational facilities
 - Maintenance/replacement of existing cultural arts and education uses

“Shall the City Charter be amended to:

- (1) Prohibit new development on Airport land, except for parks, public open spaces and public recreational facilities, until the voters approve limits on the uses and development that may occur on the land; and
- (2) Affirm the City Council’s authority to manage the Airport and to close all or part of it”

60% yes, 40% no

FROM FARMLAND TO AVIATION AND MANUFACTURING CENTER

- Airfield dedicated 1923 as “Clover Field.”
- 50,000 people attended the event
- Santa Monica buys airport land from Los Angeles in 1926
- Many “Firsts”
 - Flight around the world
 - Women’s Derby
 - DC-1 Passenger Plan

pg. 111

NATION ACCEPTS AIRPLANE FIELD

Fifty Thousand Persons See Dedication

Santa Monica Landing-Place Pleases Army Chief

Dozens of Flyers Give Thrill to Spectators

NOTABLES AT BANQUET
 The banquet was attended by about 100 reserve officers and was held at the Miramar Hotel. Many officers flew their own planes from Rockwell Field at San Diego, Crissey Field at San Francisco and Mather Field at Sacramento to attend.

The ceremonies at the field began at 3 p.m. when S. L. Berkeley presented the new field on behalf of the City of Santa Monica. In the group that surrounded him were members of the County Board of Supervisors, of the Santa Mon-

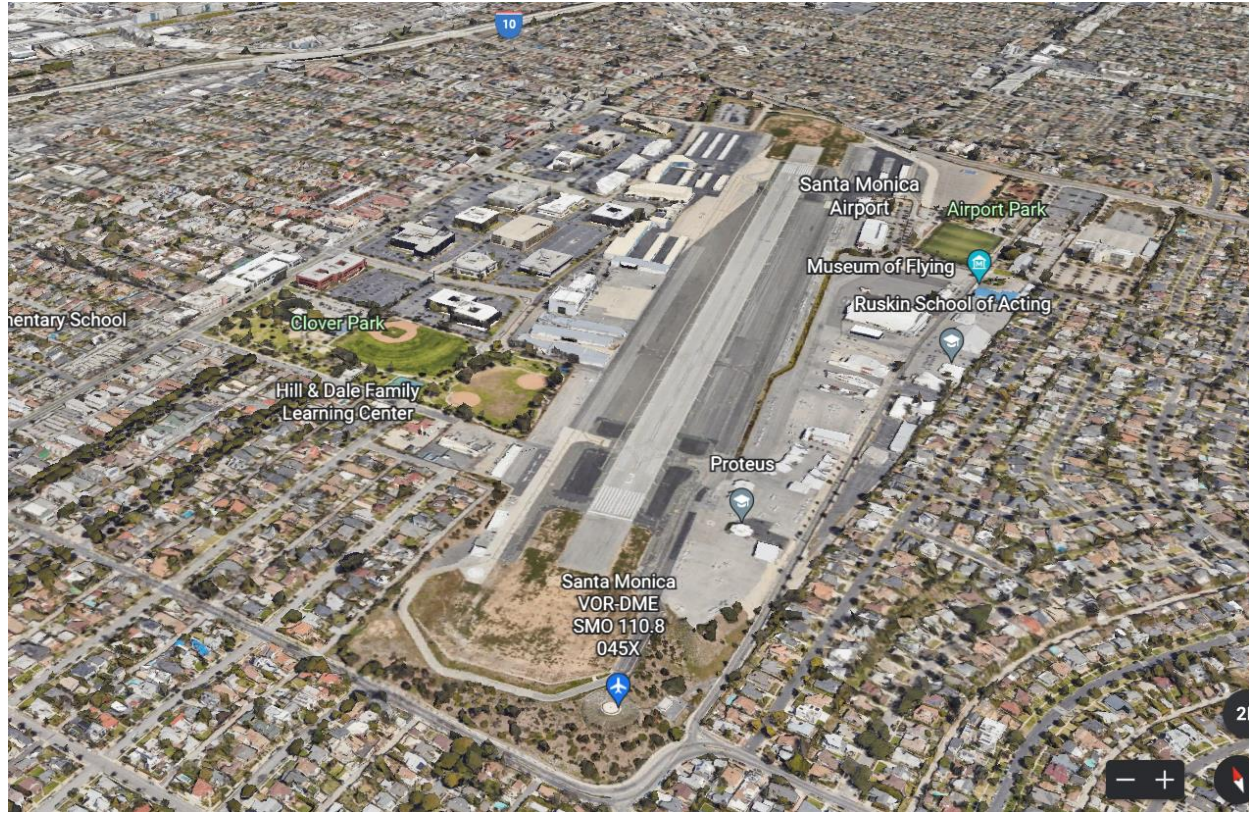
SANTA MONICA. — Clover, M., To SE. of city. Alt. 150 ft. Rectangular. 63 A., asphalt surface. Runways, 3,000 by 100 ft., entire field available. Pole line, buildings, radio towers. N. Beacon, boundary, approach, obstruction, landing area flood lights. Beacon, rotating green. Service day and night. Left hand turns permitted in landing and taking off SE.; right hand turns in landing or taking off to E. or N.

AIRPORT AT S.E. CORNER OF SANTA MONICA.

100 YEARS OF SMO IN OUR COMMUNITY AS THE REGION GREW AROUND US



1924
Santa Monica Population: 15,000
Los Angeles Population: 575,000



2023
Santa Monica Population: 94,000
Los Angeles Population: 3,900,000

HIGH-LEVEL OUTLINE OF PROCESS AND SCOPE FOR FUTURE STUDY

- Global case studies
- Implementation pathways
- Funding approaches
- Staffing and consultant recommendations

*The Airport Conversion Report was not published due to delays with the Recreation and Parks Masterplan



COMMUNITY DIRECTION ON AIRPORT





City of
**Santa
Monica**

The Planning Process



THREE FUNDAMENTAL QUESTIONS TO START THE CONVERSATION

What are We
Working With?

What work needs to be
done to prepare the land?

What Do We
Want & Need?

Inclusive, multi-generational
vision

What Can We Afford?

Economic
Sustainability

IDENTIFYING CONSENSUS AROUND COMMUNITY PREFERENCES



THREE SCOPE COMPONENTS RECOMMENDED

- 1. Establish the baseline.** Comprehensive site evaluation and existing conditions.
- 2. Work with the community.** Outreach and engagement – vision, testing, consensus.
- 3. Scenario planning.** Concept exploration, alternatives planning and refinement around a great park and supporting uses.



Park – Non-revenue generating. Costly to build/maintain.



Mixed Use – Revenue generating. Growth concerns.

THREE SCOPE COMPONENTS RECOMMENDED

3. Scenario planning.

- Art Preservation and Enhancement Strategies, Facilities & Opportunities for expanded programming
- Historic Preservation
- Park Planning: Size, Design, Uses
- Connectivity and Access
- Other uses....(artist housing?)
BIG QUESTION



Park – Non-revenue generating. Costly to build/maintain.



Mixed Use – Revenue generating. Growth concerns.



City of
**Santa
Monica**

Outreach & Engagement



JUST, DIVERSE, EQUITABLE and INCLUSIVE

- Multi-year community dialogue requiring a modern approach to outreach.



WORKSHOPS



DEMOCRATIC LOTTERY



ONLINE SURVEYS



YOUTH EVENTS



NEIGHB. GROUPS



BIZ GROUPS



STAKEHOLDER MTGS



REGIONAL PARTNERS



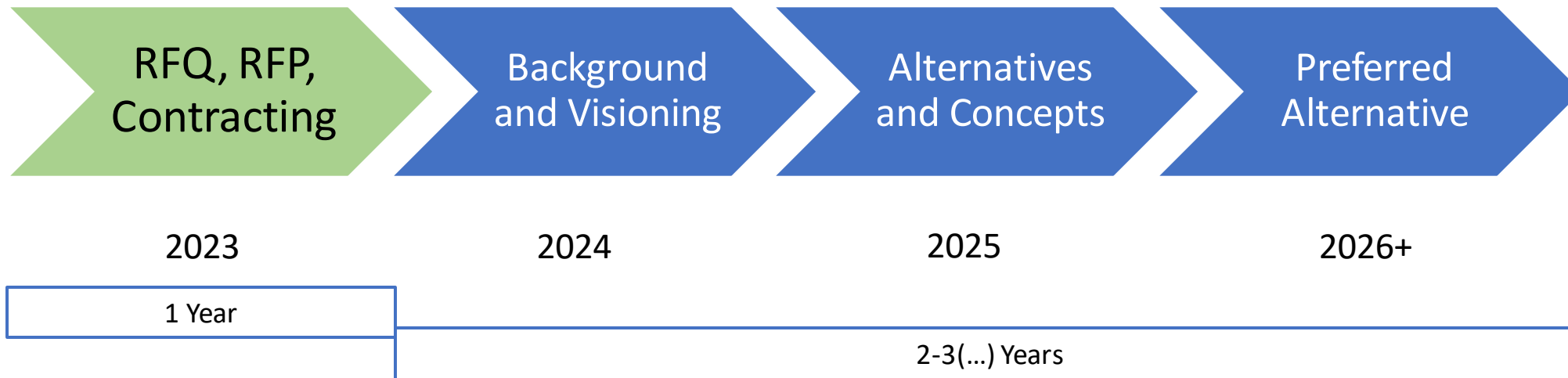


City of
**Santa
Monica**

Timelines



Project Process





City of
**Santa
Monica**

A Public Process to Determine the Future of the Santa Monica Airport

Arts Commission

March 20, 2023