



## 4th Street Enhancements Project Phase II

### Reduced Lanes on Westbound Civic Center Dr at 4<sup>th</sup> Street

**Work Dates:** Monday June 10<sup>th</sup>, 2024 – Tuesday June 11<sup>th</sup>, 2024

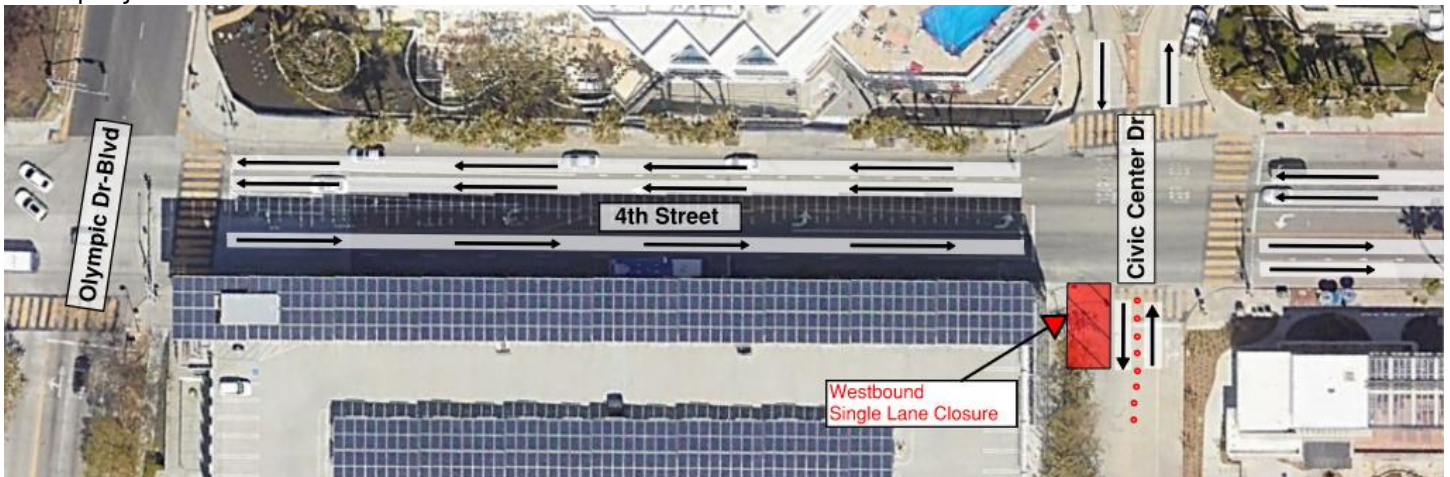
**Work Hours:** Monday-Tuesday 10 AM – 4 PM

**Closure Hours:** Monday 10 AM until Tuesday 3 PM

**Location:** Westbound Civic Center Dr at 4<sup>th</sup> St (see the map below)

Dear Neighbors:

The City of Santa Monica has contracted with Access Pacific, Inc., for the 4<sup>th</sup> Street Enhancements Project Phase II. Beginning on the week of Monday June 10, 2024 for approximately 2 days, the northwest side of Civic Center Drive at 4<sup>th</sup> Street will be closed while maintaining 1 lane open in each direction from Monday 6/10 10 AM until Tuesday 6/11 3 PM for work relating to Roadway Patch Work for this project.



Construction Period:

This phase of work is anticipated to last 2 days, Monday 6/10 10 AM until Tuesday 6/11 3 PM. Please note that the start and completion time/date of construction may be delayed due to unforeseen conditions and weather. Contractor will be operating heavy equipment, which is necessary for this work with intermittent loud noises.

For most up to date work schedule for each phase, please refer to the project website,

<https://www.santamonica.gov/civil-engineering-projects/4th-street-enhancements-project-phase-ii>

Community Traffic Closures:

- Driveways, businesses, and Civic Center Parking Structure will remain accessible at all times.
- From Monday 6/10 10 AM until Tuesday 6/11 3 PM the northwest side of Civic Center Drive at 4<sup>th</sup> Street will be closed while maintaining 1 lane open in each direction

For project inquiries contact:

**Gene Higginbotham**  
Public Works Inspector  
(310) 754-5191

[Gene.Higginbotham@psomas.com](mailto:Gene.Higginbotham@psomas.com)

**Kyle Troka**  
Construction Manager  
(815) 474-9486

[Kyle.Troka@psomas.com](mailto:Kyle.Troka@psomas.com)



@santamonicacity



@cityofsantamonica



@cityofsantamonica