

## Wilshire Boulevard Safety Improvements Phase 2A

Construction Time: February 3, 2025, through October 31, 2025

Locations: Wilshire Blvd. & 16<sup>th</sup> St.

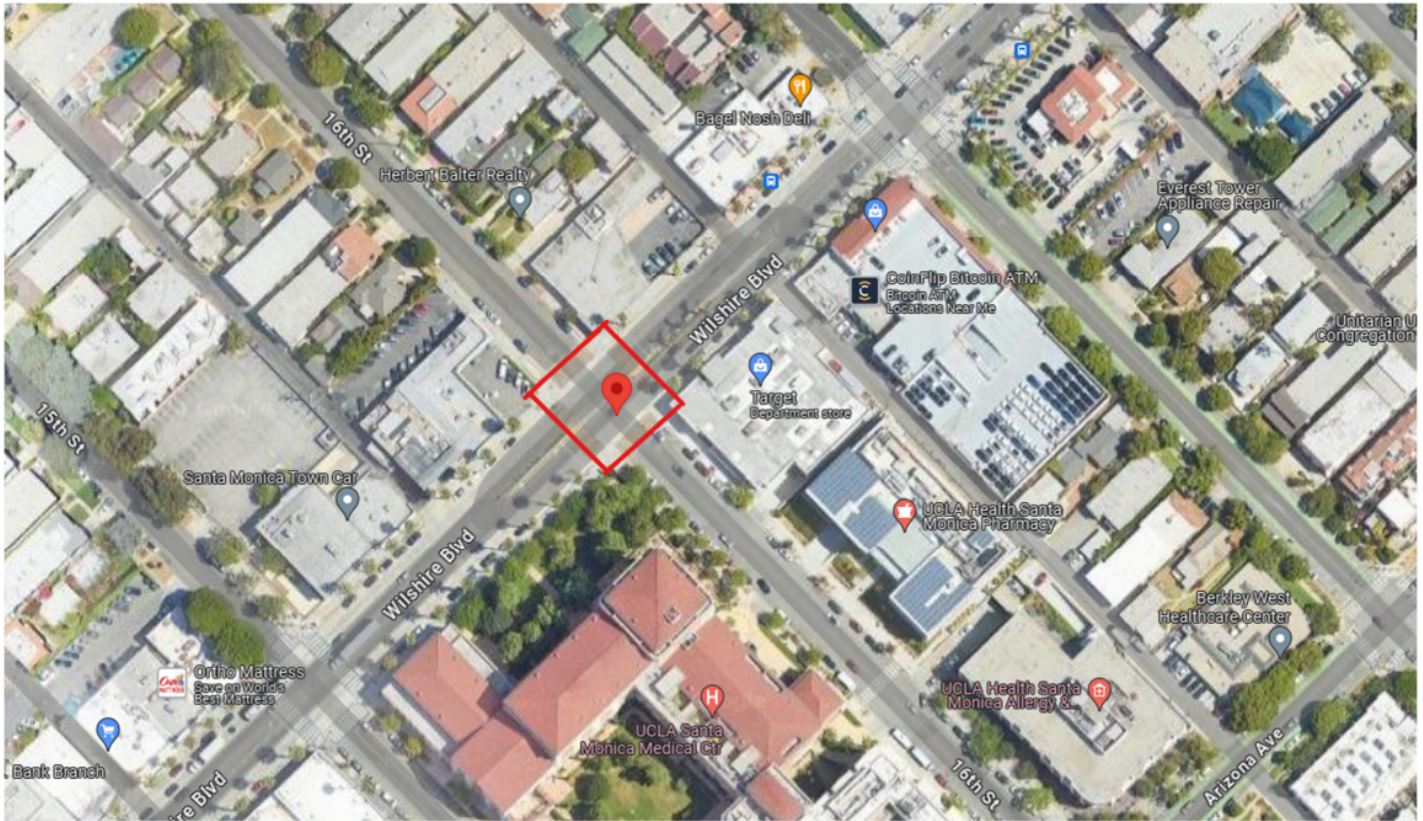
Description: Traffic Signal improvements

Work Hours: 8AM – 6PM; Monday - Friday

Dear Neighbor,

The City of Santa Monica has contracted with Access Pacific Inc for the implementation of a new traffic signal, upgraded lighting, and curb extensions, all aimed at bolstering safety for pedestrians, cyclists, and drivers. The new traffic signal is expected to optimize traffic coordination, minimizing potential risks, and improving overall intersection efficiency. Additionally, the upgraded lighting system will significantly improve nighttime visibility, ensuring optimal safety conditions for all users.




There will be traffic and the operation of heavy equipment necessary to construct this project will create intermittent loud noise.



**Construction Period:** Construction will take place between the hours of 8AM – 6PM, Monday through Friday. Please note that the start and completion time/date of construction may be delayed due to unforeseen conditions and weather.

For project inquiries contact  
**Joseph Munoz, Construction  
Inspector**  
(310) 350-9738  
joseph.munoz@santamonica.gov

or contact:  
**Mareia Wasef, Construction  
Manager**  
(310) 401-0432  
Mareia.wasef@santamonica.gov

 @santamonicacity  
 @cityofsantamonica  
 @cityofsantamonica





# NOTICE

**Traffic Impacts:** During the construction, traffic at the project locations will be impacted. Please follow all construction signs. Portions of sidewalk may be closed. Access to driveways will remain open during the project unless work is taking place directly in front of a driveway. On that occasion the property owner will be notified directly by the Contractor.

For the most up-to-date information for the project, please visit the City's webpage at [santamonica.gov - Wilshire and 16th Signal Improvements](http://santamonica.gov - Wilshire and 16th Signal Improvements)




Este aviso está publicado en español en la siguiente página web que se encuentra aquí: [santamonica.gov - Wilshire and 16th Signal Improvements](http://santamonica.gov - Wilshire and 16th Signal Improvements)

Should you have any questions or concerns, please feel free reach out to me, Mareia Wasef, directly at [mareia.wasef@santamonica.gov](mailto:mareia.wasef@santamonica.gov) or at 310.401.0432.

We understand this process is inconvenient and will make every effort to minimize any inconvenience that this work may cause. Thank you in advance for your patience and understanding.

For project inquiries contact  
**Joseph Munoz, Construction  
Inspector**  
(310) 350-9738  
[joseph.munoz@santamonica.gov](mailto:joseph.munoz@santamonica.gov)

or contact:  
**Mareia Wasef, Construction  
Manager**  
(310) 401-0432  
[Mareia.wasef@santamonica.gov](mailto:Mareia.wasef@santamonica.gov)

 [@santamonicacity](https://twitter.com/santamonicacity)  
 [@cityofsantamonica](https://www.instagram.com/cityofsantamonica)  
 [@cityofsantamonica](https://www.facebook.com/cityofsantamonica)

