



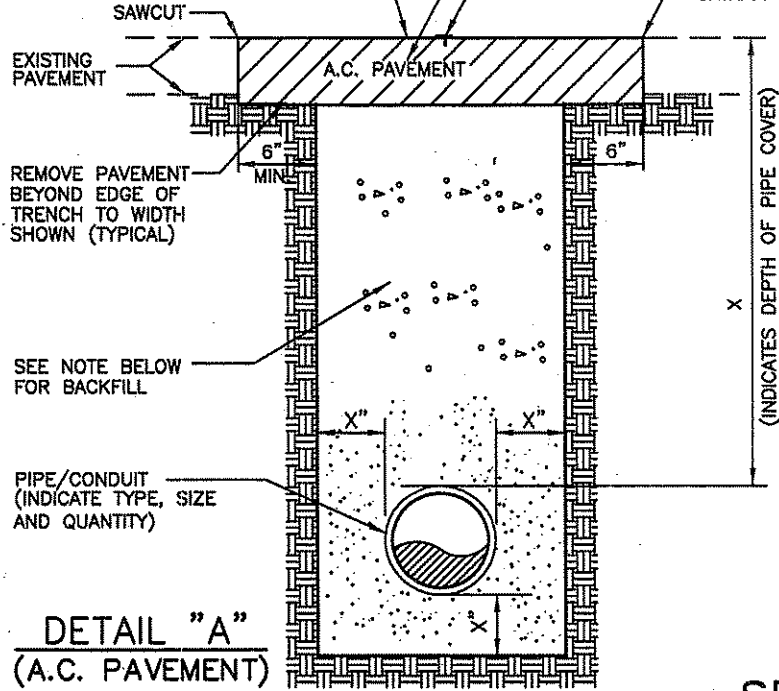
City of Santa Monica
 Department of Public Works

1437 4th Street, Suite 300 Santa Monica, CA 90401
 TEL. (310) 458-8721 FAX. (310) 393-4425
 e-mail : smeng@cityofsm.net

PAVE 1" WEARING COURSE WITH D2-PG-6410 A.C. FLUSH WITH EXISTING FINISH GRADE, WITHIN 15 TO 20 DAYS AFTER THE BASE COURSE IS COMPLETED

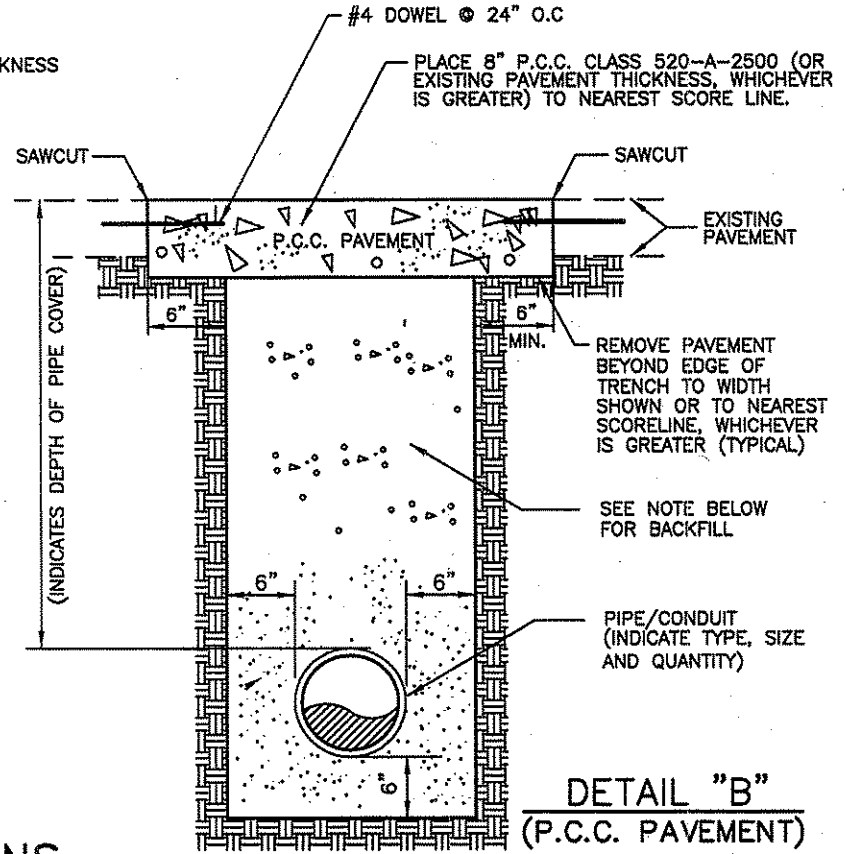
PAVE 5" (OR EXISTING PAVEMENT THICKNESS PLUS 1", WHICHEVER IS GREATER) WITH C2-PG-6410 A.C.

PLACE UTILITY MARKER



DETAIL "A"
 (A.C. PAVEMENT)

PLACE 8" P.C.C. CLASS 520--A-2500 (OR EXISTING PAVEMENT THICKNESS, WHICHEVER IS GREATER) TO NEAREST SCORE LINE.



DETAIL "B"
 (P.C.C. PAVEMENT)

SECTIONS
 NOT TO SCALE

NOTES:

1. ALL BACKFILL SHALL BE MINIMUM 1-SACK SAND-CEMENT SLURRY, CRUSHED MISCELLANEOUS BASE (CMB), DECOMPOSED GRANITE (DG). MECHANICALLY DENSIFIED TO 90% RELATIVE COMPACTION FROM BOTTOM OF THE TRENCH TO 8" BELOW PAVEMENT. THE TOP 8" SUBGRADE SHALL BE COMPACTED TO 95% RELATIVE COMPACTION. CONTRACTOR TO PROVIDE TEST REPORTS AS EVIDENCE FOR PROPER COMPACTION.
2. IF PAVEMENT CRACKS ARE EVIDENT NEAR TRENCH, CONTRACTOR IS REQUIRED TO OVERCUT THESE CRACKS IN FULL PAVEMENT THICKNESS.
3. NEW P.C.C. PAVEMENT SHALL BE DOWELED TO EXISTING PAVEMENT. CONTACT CITY ENGINEER'S OFFICE FOR DOWELING SPECIFICATIONS.

LEGEND:

X = DISTANCES DETERMINED BY UTILITY COMPANIES

SUBMITTED BY :

APPROVED BY :

See Section
 City Engineer

DATE : 12/28/2010

TYPICAL UTILITY
 TRENCH DETAIL

DRAWING NO.

SM15

1 OF 1