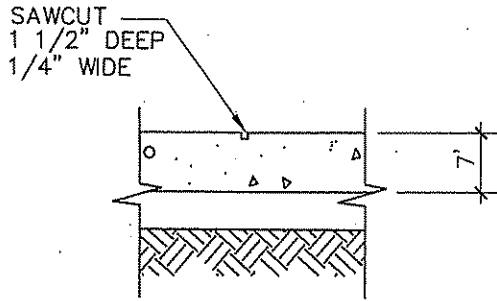


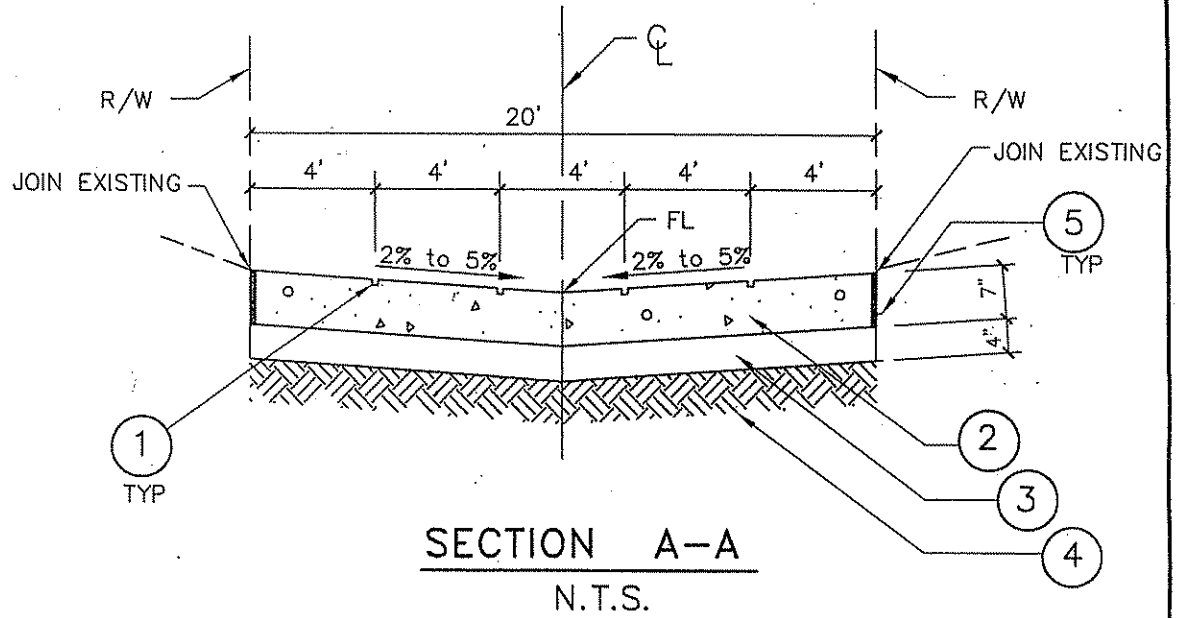


City of Santa Monica
Department of Public Works

1437 4th Street, Suite 300 Santa Monica, CA 90401
 TEL (310) 458-8721 FAX (310) 393-4425
 e-mail: smenglnearing@santagov.net



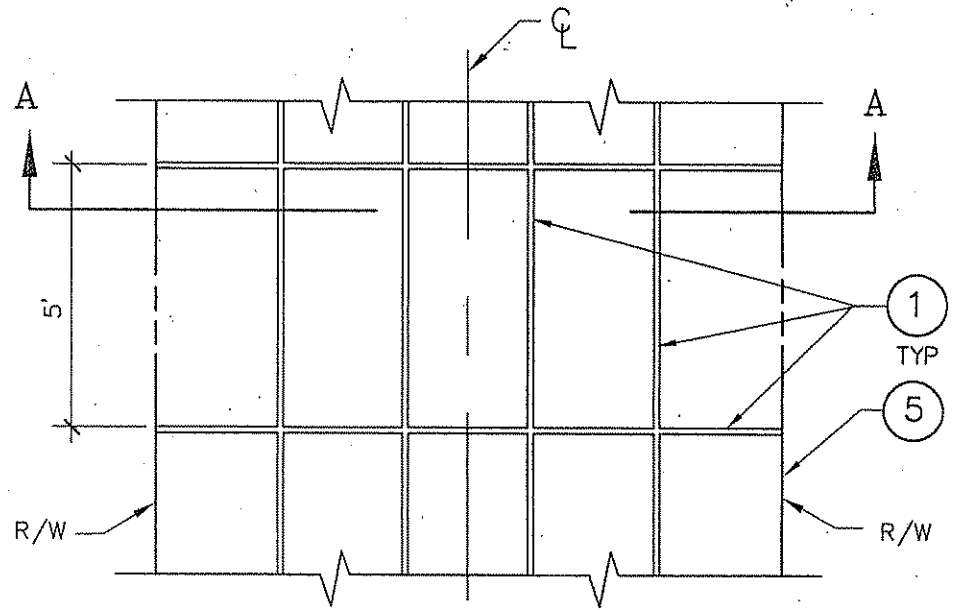
DETAIL B
 N.T.S.



SECTION A-A
 N.T.S.

NOTES

- 1 SAWCUT PER DETAIL B
- 2 CONSTRUCT 7" THICK PCC PAVEMENT (CONCRETE CLASS 660-C-4000).
- 3 CRUSHED MISCELLANEOUS BASE (CMB), 4" THICK AND COMPACTED TP 95%
- 4 COMPACT SUBGRADE TO 90%
- 5 INSTALL 1/2" THICK ASPHALT FIBER EXPANSION BOARD WHERE ALLEY ABUTTS BUILDINGS OR STRUCTURES.



PLAN
 N.T.S.

Revised 2/17/09

PORTLAND CEMENT CONCRETE ALLEY

SUBMITTED BY :

APPROVED BY :

Director of Public Works / City Engineer

DATE: 3/18/2010

DRAWING NO.

SM 3

1 of 1