



MAIN ST
AL FRESCO

BIKE ATTACK
ELECTRIC

BIKE ATTACK ELECTRIC

BIKE ATTACK

- 01 Economic Recovery and Background
- 02 Main St Vision – Design and Materials
- 03 Operations and Logistics
- 04 Timeline and Next Steps



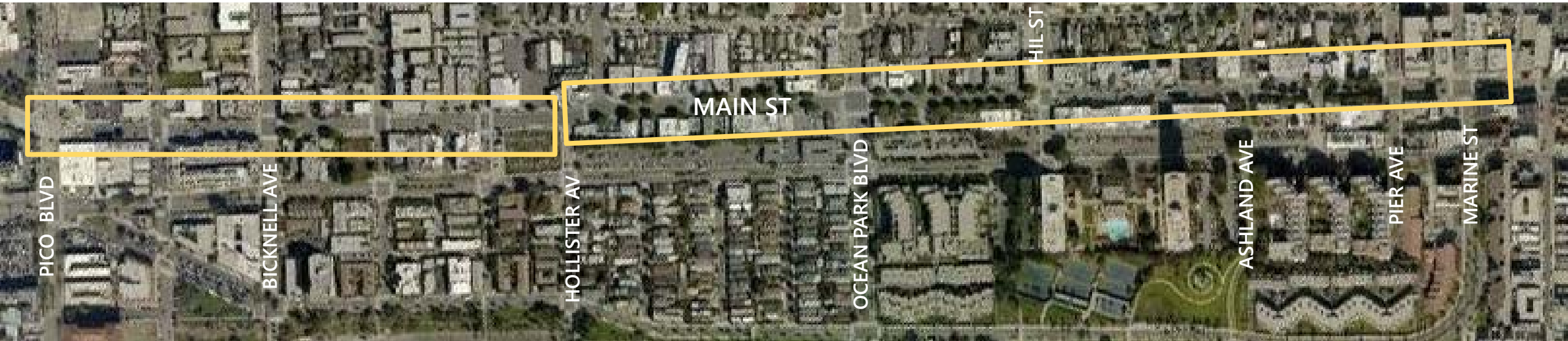
ECONOMIC RECOVERY & BACKGROUND

Why Main Street

- Business recovery in response to COVID-19
- Revitalization of Main St is important (employment attractor, life on street, sales revenues)
- Serves as a pilot or model for other commercial corridor
- Collaboration with Main St Business Improvement Association and Ocean Park Association
- Business surveys and feedback

Project Area & Considerations

RECOVERY & BACKGROUND



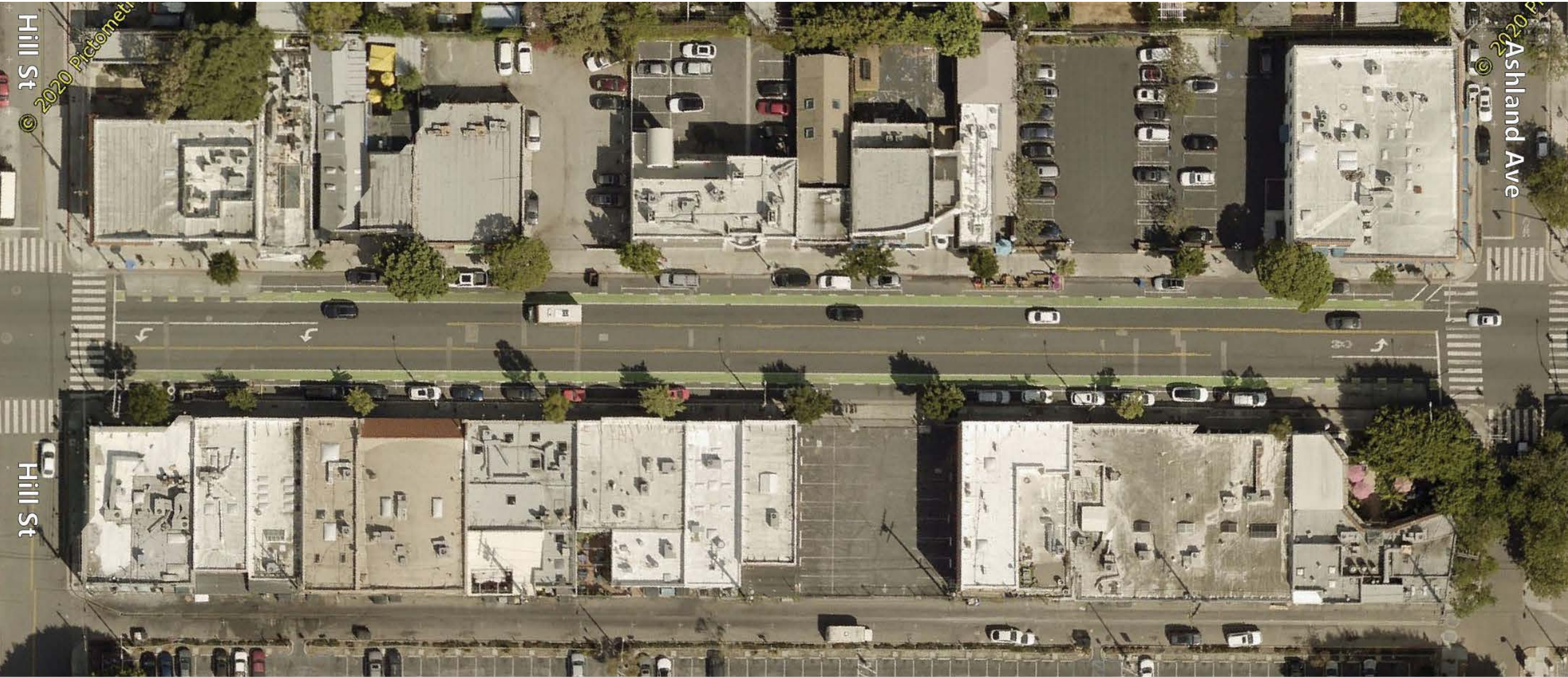
- Northern section - Pico to Hollister
- Southern section - Hollister to Marine
- Parking changes - on-street parking repurposed for pedestrian space
- Loading/curbside pick-up
- Driveway access
- Bike lanes
- Bus zones
- Side streets
- ADA



STREET DESIGN & MATERIALS

Existing – Hill to Ashland

STREET DESIGN



Planned – Hill to Ashland

STREET DESIGN



Materials for Planned Design

DESIGN & MATERIALS



Concrete K-rail or Jersey Rail



Plastic Delineators



Main St – Existing

DESIGN & MATERIALS



Main St at Pier Ave looking southbound

Main St - Planned

DESIGN & MATERIALS



Main St at Pier Ave looking southbound

Main St – Existing Parking

DESIGN & MATERIALS



Similar Example - State Street

DESIGN & MATERIALS



downtown Santa Barbara, CA

State Street – Existing Parking

DESIGN & MATERIALS



downtown Santa Barbara, CA

DESIGN & MATERIALS



downtown Santa Barbara, CA

Market St

DESIGN & MATERIALS



San Francisco, CA



OPERATIONS & LOGISTICS

Requirements

- Application checklist
- Insurance requirement
- Encroachment agreement for use public right of way
- Individual business agreements
- ABC special use permit

<https://www.santamonica.gov/EconomicRecovery>

Checks & Guides

- Checklist
- Guidebook
 - Sanitation and cleaning
 - Signage
 - Bathrooms
 - Barriers required if serving alcohol
 - Ensuring proper physical distancing
 - Tables and chairs
 - Designating space for each business
 - Common areas not claimed by a business

L.A. Al Fresco

OPERATIONS & LOGISTICS



6th Street between Mesa and Centre, San Pedro (City of LA)

L.A. Al Fresco

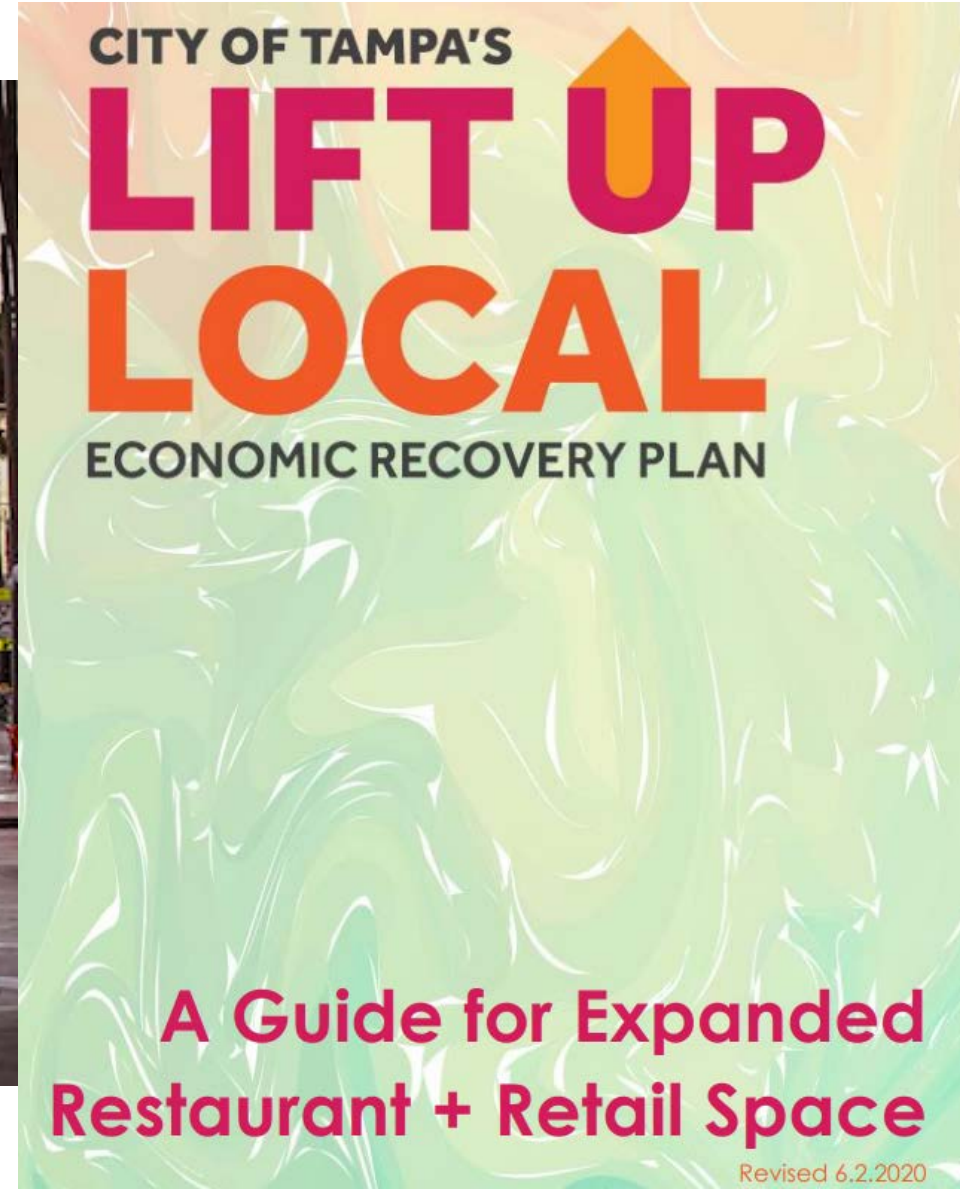
OPERATIONS & LOGISTICS



6th Street between Mesa and Centre, San Pedro

Lift Up Local - Tampa, FL

OPERATIONS & LOGISTICS



7th Ave - Ybor City

Revised 6.2.2020

Lift Up Local - Tampa, FL

OPERATIONS & LOGISTICS



7th Ave - Ybor City

Main St Space Allocation

OPERATIONS & LOGISTICS



Samosa House

Main St Space Allocation

OPERATIONS & LOGISTICS



Lula Cocina Mexicana

Main St Space Allocation

OPERATIONS & LOGISTICS



Enterprise Fish Co.



TIMELINE & NEXT STEPS

TIMELINE & NEXT STEPS

1

2

3

4

DESIGN

- Concept design
- Source materials

- Final design
- Bid/award
Signs & striping
Materials

- Begin installation
- Construction
period 6/22-25

- Complete installation
- Finalize logistics

PERMIT

- Risk Management
Assessment

- Develop requirements
& guidelines for
operating

- Finalize requirements
& guidelines for
operating

Engage
stakeholders

Engage
stakeholders

**Main St
Al Fresco
Opening Day**

Here





QUESTIONS